

ACI Racing Weekend Misano, 4-5 Maggio 2024

Campionato Italiano Gran Turismo Sprint - Classifica Libere 2

 Misano Circuit Sic 58 4.226 m
 1 / 3

	Driver 1 No. Entrant	Driver 2 Team	Car	Class	Time	Gap	Avg Laps
1	99 COLA Andrea (ITA) TRESOR AUDI SPORT ITALIA	MONCINI Leonardo (ITA) Tresor Audi Sport Italia	AUDI R8 LMS	GT3PR	1'32.611		164,274 24
2	55 JELMINI Felice (ITA) NOVA RACE EVENTS	BERTO Filippo (ITA) Nova Race Events	HONDA NSX ACURA	GT3PA	1'32.663	0.052	164,182 19
3	66 MICHELOTTO Mattia (ITA) VSR	STADSBADER Gilles (BEL) VSR	LAMBORGHINI HURACÁN EVO 2	GT3PR	1'32.862	0.251	163,830 19
4	19 CAZZANIGA Riccardo (ITA) VSR	DI FOLCO Alberto (ITA) VSR	LAMBORGHINI HURACÁN EVO 2	GT3PR	1'32.879	0.268	163,800 18
5	16 GUZMAN Raul (MEX) AKM MOTORSPORT	SANDRUCCI Gustavo (ITA) AKM Motorsport	MERCEDES AMG	GT3PA	1'33.109	0.498	163,396 23
6	85 BARTHOLOMEW Jack (GBR) IMPERIALE SPORT CAR SERVICE	DENES Philippe (USA) Imperiale Sport Car Service	LAMBORGHINI HURACÁN EVO 2	GT3PR	1'33.139	0.528	163,343 22
7	88 DI AMATO Daniele (ITA) AF CORSE	BOGUSLAVSKIY Timur AF Corse	FERRARI 488	GT3PR	1'33.213	0.602	163,213 24
8	97 BLATTNER Dustin (USA) FACH AUTO TECH	MARSCHALL Dennis (DEU) Fach Auto Tech	PORSCHE 911 CUP 992	GT3PA	1'33.217	0.606	163,206 24
9	12 DELLI GUANTI Pietro (ITA) TRESOR AUDI SPORT ITALIA	MAZZOLA Rocco (ITA) Tresor Audi Sport Italia	AUDI R8 LMS	GT3PR	1'33.242	0.631	163,163 20
10	7 KLINGMANN Jens (DEU) BMW ITALIA CECCATO RACING	HESSE Max (DEU) BMW Italia Ceccato Racing	BMW G82 M4	GT3PR	1'33.384	0.773	162,914 23
11	23 COLUCCIO Luigi (ITA) BEST LAP	POSTIGLIONE Vito (ITA) Best Lap	FERRARI 488	GT3PA	1'33.628	1.017	162,490 22
12	52 FERATI Jasin (CHE) AF CORSE	NURMI Luka (FIN) AF Corse	FERRARI 296	GT3PR	1'33.670	1.059	162,417 26
13	5 DI GIUSTO Mattia (ITA) LAZARUS CORSE	ALATALO William (FIN) Lazarus Corse	ASTON MARTIN VANTAGE AMR	GT3PA	1'33.677	1.066	162,405 21
14	63 MOULIN Baptiste (BEL) VSR	FABI Alessandro (ITA) VSR	LAMBORGHINI HURACÁN EVO 2	GT3PA	1'33.752	1.141	162,275 18
15	22 BIAGI Thomas (ITA) EASY RACE	TRULLI Enzo (ITA) Easy Race	FERRARI 296	GT3PR	1'33.774	1.163	162,237 20
16	8 MALVESTITI Federico (ITA) BMW ITALIA CECCATO RACING	EBRAHIM Pedro (BRA) BMW Italia Ceccato Racing	BMW G82 M4	GT3PA	1'33.835	1.224	162,131 23
17	77 MAGNONI Luca (ITA) NOVA RACE EVENTS	CIGLIA Massimo (ITA) Nova Race Events	HONDA NSX ACURA	GT3AM	1'33.844	1.233	162,116 22
18	75 COLAVITA Leonardo (ITA) COLAVITA LEONARDO	MAGGI Giorgio (CHE) Double TT Racing	FERRARI 488	GT3PA	1'34.027	1.416	161,800 22
19	28 SCARPETTA Vincenzo (ITA) NOVA RACE EVENTS	SIMONINI Mattia (ITA) Nova Race Events	HONDA NSX ACURA	GT3PA	1'34.106	1.495	161,665 23
20	54 FASCICOLO Giuseppe (ITA) IMPERIALE SPORT CAR SERVICE	ROGALSKI Robin (POL) Imperiale Sport Car Service	LAMBORGHINI HURACÁN EVO 2	GT3PA	1'34.420	1.809	161,127 20
21	61 MCINTOSH Anthony (USA) AKM MOTORSPORT	MCGEE Glen (USA) AKM Motorsport	MERCEDES AMG	GT3AM	1'34.476	1.865	161,031 24
22	74 MARAZZI Stefano (ITA) ROSSOCORSA RACING	BUTTARELLI Samuele (ITA) Rossocorsa Racing	FERRARI 296	GT3AM	1'34.654	2.043	160,729 18
23	44 VENEROSI PESCIOLINI Paolo (ITA) EBIMOTORS	BACCANI Alessandro (ITA) Ebimotors	PORSCHE 911 R 992	GT3AM	1'36.269	3.658	158,032 23

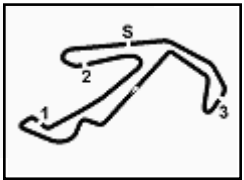
Race Director : Fabrizio Fondacci

Clerk of the Course : Alessandro Ferrari

 Start 15:00
 End 15:46
 03/05/2024



2.1



ACI Racing Weekend Misano, 4-5 Maggio 2024 Campionato Italiano Gran Turismo Sprint - Classifica Libere 2

Misano Circuit Sic 58 4.226 m
2 / 3

Humidity:	59%	AIR	17°C
Condition:	DRY	Temp:	35°C

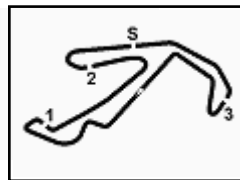
Race Director : Fabrizio Fondacci

Clerk of the Course : Alessandro Ferrari

03/05/2024	Start 15:00	End 15:46
------------	----------------	--------------



Powered by FICr PERUGIA TIMING


ACI Racing Weekend Misano, 4-5 Maggio 2024
Campionato Italiano Gran Turismo Sprint - Classifica Libere 2

Misano Circuit Sic 58 4.226 m

3 / 3

Penalty and Infringement

15.03	52	AF Corse	Time Deleted (1'34.762) - Exceeded Track Limits - Turn 6
15.04	88	AF Corse	Time Deleted (1'34.987) - Exceeded Track Limits - Turn 8
15.04	55	Nova Race Events	Time Deleted (1'53.296) - Exceeded Track Limits - Turn 8
15.04	19	VSR	Time Deleted (1'33.665) - Exceeded Track Limits - Turn 6
15.15	8	BMW Italia Ceccato Racing	Time Deleted (1'46.264) - Exceeded Track Limits - Turn 8
15.15	88	AF Corse	Time Deleted (1'34.399) - Exceeded Track Limits - Turn 8
15.15	22	Easy Race	Time Deleted (1'34.850) - Exceeded Track Limits - Turn 8
15.17	12	Tresor Audi Sport Italia	Time Deleted (1'34.013) - Exceeded Track Limits - Turn 8
15.17	63	VSR	Time Deleted (2'56.219) - Exceeded Track Limits - Turn 6
15.17	52	AF Corse	Time Deleted (1'36.418) - Exceeded Track Limits - Turn 6
15.18	85	Imperiale Sport Car Service	Lap (1'33.486) and Following Deleted - Exceeded Track Limits - Turn 16
15.18	5	Lazarus Corse	Time Deleted (1'36.565) - Exceeded Track Limits - Turn 6
15.19	61	AKM Motorsport	Lap (1'34.573) and Following Deleted - Exceeded Track Limits - Turn 16
15.19	19	VSR	Time Deleted (1'33.657) - Exceeded Track Limits - Turn 13
15.20	88	AF Corse	Time Deleted (1'33.249) - Exceeded Track Limits - Turn 8
15.21	63	VSR	Time Deleted (1'33.506) - Exceeded Track Limits - Turn 6
15.22	66	VSR	Time Deleted (1'34.249) - Exceeded Track Limits - Turn 8
15.24	7	BMW Italia Ceccato Racing	Time Deleted (1'33.609) - Exceeded Track Limits - Turn 13
15.24	63	VSR	Lap (1'33.589) and Following Deleted - Exceeded Track Limits - Turn 16
15.24	55	Nova Race Events	Lap (1'50.308) and Following Deleted - Exceeded Track Limits - Turn 16
15.25	66	VSR	Time Deleted (1'33.933) - Exceeded Track Limits - Turn 8
15.25	22	Easy Race	Time Deleted (5'33.948) - Exceeded Track Limits - Turn 8
15.26	66	VSR	Time Deleted (1'34.172) - Exceeded Track Limits - Turn 16
15.26	19	VSR	Time Deleted (1'33.134) - Exceeded Track Limits - Turn 6
15.26	85	Imperiale Sport Car Service	Time Deleted (1'36.248) - Exceeded Track Limits - Turn 8
15.27	63	VSR	Lap (1'33.687) and Following Deleted - Exceeded Track Limits - Turn 16
15.28	66	VSR	Time Deleted (1'33.277) - Exceeded Track Limits - Turn 8
15.28	85	Imperiale Sport Car Service	Time Deleted (1'33.900) - Exceeded Track Limits - Turn 8
15.28	85	Imperiale Sport Car Service	Time Deleted (1'33.775) - Exceeded Track Limits - Turn 16
15.29	16	AKM Motorsport	Time Deleted (1'34.137) - Exceeded Track Limits - Turn 13
15.30	99	Tresor Audi Sport Italia	Time Deleted (1'43.871) - Exceeded Track Limits - Turn 13
15.32	66	VSR	Lap (1'33.814) and Following Deleted - Exceeded Track Limits - Turn 16
15.32	75	Colavita Leonardo	Time Deleted (1'53.503) - Exceeded Track Limits - Turn 8
15.33	75	Colavita Leonardo	Lap (1'53.503) and Following Deleted - Exceeded Track Limits - Turn 16
15.33	28	Nova Race Events	Time Deleted (1'34.990) - Exceeded Track Limits - Turn 8
15.33	23	Best Lap	Time Deleted (1'33.899) - Exceeded Track Limits - Turn 8
15.34	85	Imperiale Sport Car Service	Time Deleted (1'33.647) - Exceeded Track Limits - Turn 8
15.36	74	Rossocorsa Racing	Time Deleted (2'01.374) - Exceeded Track Limits - Turn 8
15.37	75	Colavita Leonardo	Time Deleted (1'34.624) - Exceeded Track Limits - Turn 13
15.38	97	Fach Auto Tech	Lap (1'34.303) and Following Deleted - Exceeded Track Limits - Turn 16
15.40	74	Rossocorsa Racing	Time Deleted (1'38.485) - Exceeded Track Limits - Turn 8
15.41	5	Lazarus Corse	Time Deleted (1'34.313) - Exceeded Track Limits - Turn 6
15.42	99	Tresor Audi Sport Italia	Time Deleted (1'33.377) - Exceeded Track Limits - Turn 8
15.43	28	Nova Race Events	Time Deleted (1'34.937) - Exceeded Track Limits - Turn 8
15.43	44	Ebimotors	Time Deleted (1'37.132) - Exceeded Track Limits - Turn 6
15.43	74	Rossocorsa Racing	Time Deleted (1'38.251) - Exceeded Track Limits - Turn 8
15.44	88	AF Corse	Current Lap Deleted - Exceeded Track Limits - Turn 8

Fastest Laps Sequence

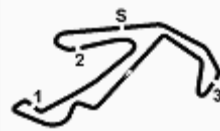
No.	Entrant	Nat	Team	Car	Local Time	Time	Gap	Avg
88	D. DI AMATO	ITA	AF Corse	Ferrari 488	15:03'34.197	1'35.839		158,741
7	J. KLINGMANN	DEU	BMW Italia Ceccato Racing	BMW G82 M4	15:03'39.163	1'34.115	-1.724	161,649
66	M. MICHELOTTO	ITA	VSR	Lamborghini Huracán Evo 2	15:03'43.235	1'32.885	-1.230	163,790
66	M. MICHELOTTO	ITA	VSR	Lamborghini Huracán Evo 2	15:09'57.526	1'32.862	-0.023	163,830
99	A. COLA	ITA	Tresor Audi Sport Italia	Audi R8 LMS	15:21'06.469	1'32.611	-0.251	164,274

Race Director : Fabrizio Fondacci

Clerk of the Course : Alessandro Ferrari

	Start	End
03/05/2024	15:00	15:46




ACI Racing Weekend Misano, 4-5 Maggio 2024
Campionato Italiano Gran Turismo Sprint - Best Sectors & Speed Libere 2

Misano Circuit Sic 58 4.226 m

BEST LAP		
1	99 TRESOR AUDI SPORT ITALIA	Audi R8 LMS 1'32.611
2	55 NOVA RACE EVENTS	Honda NSX Acura 1'32.663
3	66 VSR	Lamborghini Huracán Evo 2 1'32.862
4	19 VSR	Lamborghini Huracán Evo 2 1'32.879
5	16 AKM MOTORSPORT	Mercedes AMG 1'33.109
6	85 IMPERIALE SPORT CAR SER	Lamborghini Huracán Evo 2 1'33.139
7	88 AF CORSE	Ferrari 488 1'33.213
8	97 FACH AUTO TECH	Porsche 911 Cup 992 1'33.217
9	12 TRESOR AUDI SPORT ITALIA	Audi R8 LMS 1'33.242
10	7 BMW ITALIA CECCATO RAC	BMW G82 M4 1'33.384
11	23 BEST LAP	Ferrari 488 1'33.628
12	52 AF CORSE	Ferrari 296 1'33.670
13	5 LAZARUS CORSE	Aston Martin Vantage AMR 1'33.677
14	63 VSR	Lamborghini Huracán Evo 2 1'33.752
15	22 EASY RACE	Ferrari 296 1'33.774
16	8 BMW ITALIA CECCATO RAC	BMW G82 M4 1'33.835
17	77 NOVA RACE EVENTS	Honda NSX Acura 1'33.844
18	75 COLAVITA LEONARDO	Ferrari 488 1'34.027
19	28 NOVA RACE EVENTS	Honda NSX Acura 1'34.106
20	54 IMPERIALE SPORT CAR SER	Lamborghini Huracán Evo 2 1'34.420
21	61 AKM MOTORSPORT	Mercedes AMG 1'34.476
22	74 ROSSOCORSA RACING	Ferrari 296 1'34.654
23	44 EBIMOTORS	Porsche 911 R 992 1'36.269

SPEED		
1	55 NOVA RACE EVENTS	Honda NSX Acura 225,5
2	85 IMPERIALE SPORT CAR SER	Lamborghini Huracán Evo 2 221,8
3	8 BMW ITALIA CECCATO RAC	BMW G82 M4 221,3
4	23 BEST LAP	Ferrari 488 221,3
5	7 BMW ITALIA CECCATO RAC	BMW G82 M4 220,9
6	66 VSR	Lamborghini Huracán Evo 2 220,9
7	28 NOVA RACE EVENTS	Honda NSX Acura 220,9
8	77 NOVA RACE EVENTS	Honda NSX Acura 220,0
9	74 ROSSOCORSA RACING	Ferrari 296 220,0
10	19 VSR	Lamborghini Huracán Evo 2 219,5
11	54 IMPERIALE SPORT CAR SER	Lamborghini Huracán Evo 2 219,1
12	22 EASY RACE	Ferrari 296 218,6
13	12 TRESOR AUDI SPORT ITALIA	Audi R8 LMS 218,6
14	99 TRESOR AUDI SPORT ITALIA	Audi R8 LMS 218,2
15	63 VSR	Lamborghini Huracán Evo 2 218,2
16	88 AF CORSE	Ferrari 488 217,7
17	52 AF CORSE	Ferrari 296 217,3
18	44 EBIMOTORS	Porsche 911 R 992 217,3
19	97 FACH AUTO TECH	Porsche 911 Cup 992 216,4
20	5 LAZARUS CORSE	Aston Martin Vantage AMR 216,4
21	61 AKM MOTORSPORT	Mercedes AMG 216,4
22	16 AKM MOTORSPORT	Mercedes AMG 216,4
23	75 COLAVITA LEONARDO	Ferrari 488 159,3

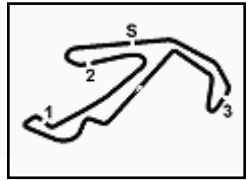
SEG. 1	
1	99 TRESOR AUDI SPORT 24.206
2	55 NOVA RACE EVENTS 24.376
3	97 FACH AUTO TECH 24.413
4	19 VSR 24.423
5	16 AKM MOTORSPORT 24.448
6	88 AF CORSE 24.498
7	63 VSR 24.526
8	23 BEST LAP 24.535
9	12 TRESOR AUDI SPORT 24.538
10	5 LAZARUS CORSE 24.575
11	52 AF CORSE 24.585
12	7 BMW ITALIA CECCATO 24.587
13	22 EASY RACE 24.587
14	85 IMPERIALE SPORT CA 24.589
15	66 VSR 24.593
16	75 COLAVITA LEONARDO 24.626
17	74 ROSSOCORSA RACING 24.641
18	61 AKM MOTORSPORT 24.702
19	8 BMW ITALIA CECCATO 24.721
20	28 NOVA RACE EVENTS 24.777
21	54 IMPERIALE SPORT CA 24.790
22	77 NOVA RACE EVENTS 24.916
23	44 EBIMOTORS 25.314

SEG. 2	
1	19 VSR 21.767
2	66 VSR 21.771
3	85 IMPERIALE SPORT CA 21.773
4	55 NOVA RACE EVENTS 21.811
5	7 BMW ITALIA CECCATO 21.941
6	88 AF CORSE 21.949
7	16 AKM MOTORSPORT 21.981
8	77 NOVA RACE EVENTS 21.988
9	99 TRESOR AUDI SPORT 22.011
10	52 AF CORSE 22.038
11	5 LAZARUS CORSE 22.043
12	12 TRESOR AUDI SPORT 22.050
13	8 BMW ITALIA CECCATO 22.088
14	23 BEST LAP 22.103
15	97 FACH AUTO TECH 22.108
16	63 VSR 22.124
17	28 NOVA RACE EVENTS 22.158
18	74 ROSSOCORSA RACING 22.166
19	54 IMPERIALE SPORT CA 22.177
20	22 EASY RACE 22.184
21	75 COLAVITA LEONARDO 22.219
22	61 AKM MOTORSPORT 22.315
23	44 EBIMOTORS 22.660

SEG. 3	
1	99 TRESOR AUDI SPORT 25.751
2	66 VSR 25.785
3	55 NOVA RACE EVENTS 25.797
4	12 TRESOR AUDI SPORT 25.807
5	7 BMW ITALIA CECCATO 25.897
6	85 IMPERIALE SPORT CA 25.908
7	88 AF CORSE 25.925
8	19 VSR 25.932
9	8 BMW ITALIA CECCATO 25.953
10	52 AF CORSE 25.972
11	16 AKM MOTORSPORT 25.974
12	23 BEST LAP 26.043
13	97 FACH AUTO TECH 26.050
14	77 NOVA RACE EVENTS 26.060
15	75 COLAVITA LEONARDO 26.080
16	74 ROSSOCORSA RACING 26.117
17	63 VSR 26.121
18	22 EASY RACE 26.130
19	5 LAZARUS CORSE 26.165
20	28 NOVA RACE EVENTS 26.173
21	61 AKM MOTORSPORT 26.271
22	54 IMPERIALE SPORT CA 26.394
23	44 EBIMOTORS 26.458

SEG. 4	
1	66 VSR 20.425
2	19 VSR 20.488
3	99 TRESOR AUDI SPORT 20.490
4	97 FACH AUTO TECH 20.554
5	52 AF CORSE 20.557
6	55 NOVA RACE EVENTS 20.570
7	16 AKM MOTORSPORT 20.611
8	22 EASY RACE 20.625
9	23 BEST LAP 20.651
10	85 IMPERIALE SPORT CA 20.652
11	5 LAZARUS CORSE 20.677
12	12 TRESOR AUDI SPORT 20.680
13	88 AF CORSE 20.681
14	7 BMW ITALIA CECCATO 20.684
15	77 NOVA RACE EVENTS 20.701
16	75 COLAVITA LEONARDO 20.733
17	63 VSR 20.752
18	28 NOVA RACE EVENTS 20.758
19	61 AKM MOTORSPORT 20.829
20	54 IMPERIALE SPORT CA 20.844
21	8 BMW ITALIA CECCATO 20.845
22	74 ROSSOCORSA RACING 20.990
23	44 EBIMOTORS 21.584





ACI Racing Weekend Misano, 4-5 Maggio 2024

Campionato Italiano Gran Turismo Sprint - Analisi Tempi Libere 2

Misano Circuit Sic 58.4.226 m

1 / 5

5 Lazarus Corse (1'33.677)

Lap	Seg.1	Seg.2	Seg.3	Seg.4	Lap Time	km/h	Local Time
1		23.576	27.117	21.936		211,4	
2	25.667	22.807	26.522	21.399	1'36.395	213,0	15:04'43.136
3	25.141	22.440	26.392	21.192	1'35.165	214,7	15:06'18.301
4	25.223	22.440	27.118	21.324	1'36.105	215,1	15:07'54.406
5	25.319	22.562	26.493	22.059	1'36.433	216,4	15:09'30.839
6	25.244	22.625	26.535	29.822	1'44.226P	214,3	15:11'15.065
7	3'38.173	27.922	32.951	21.934	5'00.980P	140,6	15:16'16.045
8	24.655	22.091	26.165	20.766	1'33.677	215,1	15:17'49.722
9	24.853	22.197	26.706	22.809	1'36.565C	215,6	15:19'26.287
10	24.575	22.043	26.346	21.272	1'34.236	215,1	15:21'00.523
11	25.512	22.621	28.271	32.321	1'48.725P	182,4	15:22'49.248
12	2'51.029	22.797	26.467	21.193	4'01.486P	213,4	15:26'50.734
13	25.148	22.378	26.399	20.964	1'34.889	214,3	15:28'25.623
14	24.818	22.277	26.447	20.944	1'34.486	214,7	15:30'00.109
15	24.721	22.390	26.241	20.979	1'34.331	213,9	15:31'34.440
16	24.891	22.301	26.193	29.884	1'43.269P	216,4	15:33'17.709
17	1'49.210	26.822	29.556	21.297	3'06.885P	207,3	15:36'24.594
18	24.975	22.196	26.366	20.841	1'34.378	215,6	15:37'58.972
19	24.836	22.081	26.282	20.677	1'33.876	215,1	15:39'32.848
20	25.176	22.559	26.435	20.786	1'34.956	214,7	15:41'07.804
21	24.815	22.439	26.243	20.816	1'34.313C	216,0	15:42'42.117
22	27.076	23.126	26.399	30.587	1'47.188P	216,4	15:44'29.305

10	2'38.946	22.736	26.433	21.285	3'49.400P	218,2	15:20'05.212
11	24.787	22.242	26.115	21.049	1'34.193	220,0	15:21'39.405
12	24.807	22.252	26.030	20.978	1'34.067	221,3	15:23'13.472
13	24.814	22.187	26.031	20.893	1'33.925	220,4	15:24'47.397
14	24.827	22.280	25.953	25.585	1'38.645	220,4	15:26'26.042
15	24.721	22.240	26.054	20.907	1'33.922	220,0	15:27'59.964
16	24.909	22.227	26.136	30.593	1'43.865P	220,0	15:29'43.829
17	1'24.987	22.699	26.270	21.238	2'35.194P	220,4	15:32'19.023
18	24.779	22.149	26.018	21.002	1'33.948	219,1	15:33'52.971
19	24.838	22.120	26.052	20.974	1'33.984	220,0	15:35'26.955
20	24.810	22.269	26.011	21.162	1'34.252	220,9	15:37'01.207
21	24.948	22.088	26.146	21.018	1'34.200	220,0	15:38'35.407
22	24.775	22.147	26.015	20.898	1'33.835	220,0	15:40'09.242
23	24.840	22.291	26.094	30.848	1'44.073P	220,0	15:41'53.315
24	1'28.852	22.522	26.166	30.746	2'48.286P	220,9	15:44'41.601

12 Tresor Audi Sport Italia (1'33.242)

Lap	Seg.1	Seg.2	Seg.3	Seg.4	Lap Time	km/h	Local Time
1		26.599	32.910	21.845		181,5	
2	29.108	28.811	31.236	24.431	1'53.586	170,9	15:04'09.386
3	25.611	22.872	26.915	21.112	1'36.510	216,4	15:05'45.896
4	24.994	22.450	26.068	20.891	1'34.403	218,6	15:07'20.299
5	24.620	22.182	26.164	20.680	1'33.646	217,7	15:08'53.945
6	24.967	22.277	26.146	20.874	1'34.264	217,7	15:10'28.209
7	28.407	25.694	28.725	33.881	1'56.707P	213,4	15:12'24.916
8	2'18.257	25.087	26.805	23.106	3'33.255P	216,0	15:15'58.171
9	24.642	22.357	26.004	21.010	1'34.013C	217,7	15:17'32.184
10	24.911	22.299	26.024	20.879	1'34.113	218,2	15:19'06.297
11	24.844	22.257	26.036	20.794	1'33.931	218,2	15:20'40.228
12	26.162	23.095	26.496	21.085	1'36.838	216,9	15:22'17.066
13	24.651	22.205	25.954	20.759	1'33.569	217,3	15:23'50.635
14	24.538	22.051	25.969	20.684	1'33.242	217,3	15:25'23.877
15	24.657	22.050	25.807	20.776	1'33.290	218,2	15:26'57.167
16	25.525	22.517	26.049	30.758	1'44.849P	218,2	15:28'42.016
17	2'12.850	24.237	26.292	20.964	3'24.343P	217,7	15:32'06.359
18	24.936	22.217	26.116	20.776	1'34.045	217,7	15:33'40.404
19	25.257	23.138	27.783	21.114	1'37.292	210,1	15:35'17.696
20	25.558	22.705	28.203	24.079	1'40.545	216,4	15:36'58.241
21	27.054	29.015	37.990	36.018	2'10.077P	146,3	15:39'08.318

16 AKM Motorsport (1'33.109)

Lap	Seg.1	Seg.2	Seg.3	Seg.4	Lap Time	km/h	Local Time
1							
2	1'02.126	24.442	29.375	57.873	2'53.816P	201,9	15:03'54.950
3	42.817	23.276	28.058	21.602	1'55.753P	177,9	15:05'50.703
4	25.389	22.869	26.513	21.461	1'36.232C	215,6	15:07'26.935
5	25.654	22.574	26.444	21.136	1'35.808	216,0	15:09'02.743
6	25.088	22.513	27.059	21.367	1'36.027C	215,1	15:10'38.770
7	24.950	22.504	26.448	21.036	1'34.938	215,6	15:12'13.708
8	24.973	22.482	26.450	21.214	1'35.119	214,3	15:13'48.827
9	25.055	22.681	26.232	21.090	1'35.058	214,7	15:15'23.885
10	24.933	22.520	26.281	21.113	1'34.847	214,7	15:16'58.732
11	25.635	22.821	26.686	1'41.502	2'56.644P	214,3	15:19'55.376
12	41.888	22.954	26.585	21.315	1'52.742P	214,3	15:21'48.118
13	24.949	22.444	26.453	21.448	1'35.294	214,7	15:23'23.412
14	24.819	22.420	26.457	21.645	1'35.341	214,7	15:24'58.753
15	24.967	22.384	26.241	20.858	1'34.450	215,6	15:26'33.203
16	26.153	23.194	26.940	21.445	1'37.732	215,1	15:28'10.935
17	24.770	22.243	26.188	20.936	1'34.137C	215,1	15:29'45.072
18	26.133	23.122	26.537	1'41.262	2'57.054P	215,1	15:32'42.126
19	42.337	23.433	26.627	20.989	1'53.386P	213,0	15:34'35.512
20	24.492	22.255	26.191	20.873	1'33.811	215,1	15:36'09.323
21	24.448	22.280	32.062	1'43.331	3'02.121P	195,3	15:39'11.444

7 BMW Italia Ceccato Racing (1'33.384)

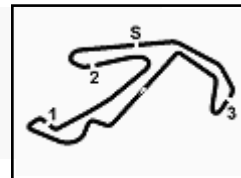
Lap	Seg.1	Seg.2	Seg.3	Seg.4	Lap Time	km/h	Local Time
1		23.397	27.124	21.031		217,7	
2	24.862	22.318	26.054	20.881	1'34.115	220,0	15:03'39.163
3	24.703	22.143	25.897	20.971	1'33.714	220,0	15:05'12.877
4	27.155	24.366	26.808	22.859	1'41.188	218,6	15:06'54.065
5	24.888	22.101	25.905	23.066	1'35.960	220,9	15:08'30.025
6	24.587	22.053	25.992	20.752	1'33.384	219,5	15:10'03.409
7	24.620	21.941	26.180	30.318	1'43.059P	220,4	15:11'46.468
8	1'27.518	22.416	26.248	22.543	2'38.725P	218,6	15:14'25.193
9	25.090	22.507	26.414	20.951	1'34.962	218,2	15:16'00.155
10	24.861	22.336	26.061	20.855	1'34.113	218,6	15:17'34.268
11	24.930	22.186	26.098	32.611	1'45.825P	218,2	15:19'20.093
12	2'10.759	22.307	26.175	20.941	3'20.182P	218,6	15:22'40.275
13	24.602	22.223	26.065	20.719	1'33.609C	219,5	15:24'13.884
14	24.803	22.128	26.023	20.796	1'33.750	219,1	15:25'47.634
15	24.703	22.304	26.096	20.908	1'34.011	218,6	15:27'21.645
16	25.417	22.592	26.073	21.412	1'35.494	218,6	15:28'57.139
17	24.767	22.034	26.221	20.726	1'33.748	220,4	15:30'30.887
18	25.022	22.262	26.235	30.536	1'44.055P	218,2	15:32'14.942
19	2'31.327	22.207	26.032	22.008	3'41.574P	218,6	15:35'56.516
20	25.824	22.206	25.937	20.756	1'34.723	218,2	15:37'31.239
21	24.664	22.140	26.026	20.684	1'33.514	219,1	15:39'04.753
22	24.616	22.096	25.958	20.753	1'33.423	219,1	15:40'38.176
23	24.772	22.066	26.020	30.028	1'42.886P	219,1	15:42'21.062
24	1'47.008	22.027	26.411	20.861	2'56.307P	218,6	15:45'17.369

8 BMW Italia Ceccato Racing (1'33.835)

Lap	Seg.1	Seg.2	Seg.3	Seg.4	Lap Time	km/h	Local Time
1		24.834	27.349	32.667		219,1	
2	1'27.402	22.787	26.198	21.201	2'37.588P	220,0	15:04'59.406
3	24.749	22.442	26.148	20.930	1'34.269	220,4	15:06'33.675
4	24.921	22.377	26.407	25.131	1'38.836	220,9	15:08'12.511
5	24.881	22.358	26.036	20.890	1'34.165	220,4	15:09'46.676
6	24.728	22.264	26.156	20.845	1'33.993	220,0	15:11'20.669
7	25.034	22.412	26.073	20.987	1'34.506	220,9	15:12'55.175
8	24.831	22.204	26.060	21.278	1'34.373	220,4	15:14'29.548
9	25.486	22.390	26.072	32.316	1'46.264CP	219,5	15:16'15.812

03/05/2024

P = Pits In/Out - C = Lap Time Cancelled



ACI Racing Weekend Misano, 4-5 Maggio 2024

Campionato Italiano Gran Turismo Sprint - Analisi Tempi Libere 2

Misano Circuit Sic 58.4.226 m

2 / 5

22	42.273	22.521	26.178	21.030	1'52.002P	214,7	15:41'03.446
23	24.622	22.526	26.386	20.850	1'34.384	216,4	15:42'37.830
24	24.453	22.071	25.974	20.611	1'33.109	214,7	15:44'10.939
25	24.797	21.981	33.934			133,0	

10	24.926	22.548	26.452	21.288	1'35.214	217,7	15:19'51.717
11	24.683	22.386	26.368	21.443	1'34.880	219,1	15:21'26.597
12	24.808	22.327	26.556	21.195	1'34.886	219,1	15:23'01.483
13	24.722	22.427	26.739	21.006	1'34.894	221,3	15:24'36.377
14	26.430	24.104	26.720	2'54.262	4'11.516P	220,0	15:28'47.893
15	1'06.379	25.045	28.018	21.009	2'20.451P	210,1	15:31'08.344
16	24.648	22.445	26.218	20.801	1'34.112	219,1	15:32'42.456
17	24.535	22.366	26.454	20.544	1'33.899C	217,7	15:34'16.355
18	24.549	22.275	26.065	21.274	1'34.163	219,1	15:35'50.518
19	24.741	22.103	26.407	37.932	1'51.183P	219,1	15:37'41.701
20	2'21.367	24.710	27.720	22.701	3'36.498P	217,7	15:41'18.199
21	24.632	22.188	26.249	20.848	1'33.917	220,0	15:42'52.116
22	24.770	22.164	26.043	20.651	1'33.628	219,5	15:44'25.744
23	24.855	22.640	28.382	33.799	1'49.676P	220,0	15:46'15.420

19 VSR (1'32.879)

Lap	Seg.1	Seg.2	Seg.3	Seg.4	Lap Time	km/h	Local Time
1		23.559	26.739	20.576		215,1	
2	24.698	22.019	26.158	20.790	1'33.665C	219,1	15:05'53.534
3	24.618	22.039	26.033	20.839	1'33.529C	219,5	15:07'27.063
4	24.857	21.944	26.118	20.671	1'33.590	219,1	15:09'00.653
5	24.555	21.931	26.080	20.620	1'33.186	219,1	15:10'33.839
6	24.725	21.997	26.557	30.944	1'44.223CP	219,1	15:12'18.062
7	4'57.492	22.340	26.633	21.019	6'07.484P	215,6	15:18'25.546
8	24.845	21.926	26.219	20.667	1'33.657C	217,7	15:19'59.203
9	24.423	21.767	26.519	20.502	1'33.211	217,3	15:21'32.414
10	24.783	22.015	26.106	20.543	1'33.447	218,6	15:23'05.861
11	24.795	21.806	26.192	20.657	1'33.450	218,2	15:24'39.311
12	24.798	22.002	26.083	20.555	1'33.438	218,6	15:26'12.749
13	24.618	21.863	26.078	20.575	1'33.134C	219,5	15:27'45.883
14	24.824	21.992	26.276	21.460	1'34.552	218,2	15:29'20.435
15	24.607	22.026	26.062	20.488	1'33.183	219,5	15:30'53.618
16	24.584	21.834	25.932	20.529	1'32.879	218,6	15:32'26.497
17	24.722	21.900	26.801	20.931	1'34.354	218,2	15:34'00.851
18	24.568	21.859	26.931	21.773	1'35.131	218,2	15:35'35.982
19	25.385	23.313	26.348	31.172	1'46.218P	219,1	15:37'22.200
20	1'29.173	22.799	27.274			217,7	

28 Nova Race Events (1'34.106)

Lap	Seg.1	Seg.2	Seg.3	Seg.4	Lap Time	km/h	Local Time
1		24.976	28.208	21.690		215,1	
2	25.701	22.922	26.567	21.429	1'36.619	219,1	15:03'36.633
3	25.147	22.753	26.507	21.533	1'35.940	220,4	15:05'12.573
4	25.645	22.777	26.422	21.572	1'36.416	219,5	15:06'48.989
5	26.247	22.391	26.475	21.467	1'36.580	219,1	15:08'25.569
6	25.785	22.543	26.449	21.346	1'36.123	219,5	15:10'01.692
7	25.078	22.522	26.407	21.113	1'35.120	219,5	15:11'36.812
8	24.962	22.733	26.545	21.183	1'35.423C	219,5	15:13'12.235
9	25.432	23.038	26.722	2'39.027	3'54.219P	219,5	15:17'06.454
10	42.522	23.783	27.255	22.104	1'55.664P	218,2	15:19'02.118
11	25.409	22.858	27.032	21.684	1'36.983	220,0	15:20'39.101
12	27.738	23.215	26.831	21.406	1'39.190	219,5	15:22'18.291
13	25.186	22.672	26.484	21.445	1'35.787	220,4	15:23'54.078
14	25.688	24.150	26.997	2'19.543	3'36.378P	218,2	15:27'30.456
15	42.471	23.826	27.766	21.547	1'55.610P	217,7	15:29'26.066
16	25.572	23.850	26.377	21.213	1'37.012	220,9	15:31'03.078
17	25.260	22.578	26.332	21.174	1'35.344	219,5	15:32'38.422
18	25.014	22.562	26.225	21.189	1'34.990C	219,1	15:34'13.412
19	24.935	22.447	26.258	21.177	1'34.817	220,0	15:35'48.229
20	25.251	22.371	26.522	1'51.356	3'05.500P	219,5	15:38'53.729
21	41.553	22.874	26.233	20.758	1'51.418P	219,5	15:40'45.147
22	24.777	22.158	26.173	20.998	1'34.106	220,0	15:42'19.253
23	24.884	22.587	26.309	21.157	1'34.937C	219,1	15:43'54.190
24	25.031	22.505	26.389	21.100	1'35.025	220,9	15:45'29.215

44 Ebimotors (1'36.269)

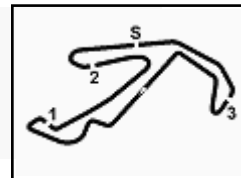
Lap	Seg.1	Seg.2	Seg.3	Seg.4	Lap Time	km/h	Local Time
1		26.910	30.157	22.962		207,7	
2	26.722	23.731	27.509	22.451	1'40.413	212,6	15:04'28.783
3	26.233	23.828	27.640	22.087	1'39.788	214,3	15:06'08.571
4	25.753	23.353	27.346	21.888	1'38.340	213,0	15:07'46.911
5	25.988	23.347	27.402	22.267	1'39.004	213,4	15:09'25.915
6	25.941	23.434	28.374	22.286	1'40.035	198,2	15:11'05.950
7	25.862	23.388	27.372	22.085	1'38.707	213,4	15:12'44.657
8	26.019	23.485	27.376	21.846	1'38.726	213,9	15:14'23.383
9	25.843	23.345	27.932	21.931	1'39.051	212,2	15:16'02.434
10	25.718	23.392	27.492	21.732	1'38.334	213,4	15:17'40.768
11	26.610	25.634	29.960	37.314	1'59.518P	201,9	15:19'40.286
12	3'00.123	26.123	28.424	22.226	4'16.896P	213,0	15:23'57.182
13	26.211	23.943	30.949	22.582	1'43.685	204,2	15:25'40.867
14	26.010	24.055	28.042	22.457	1'40.564	214,7	15:27'21.431
15	30.678	24.242	34.165	36.245	2'05.330P	143,0	15:29'26.761
16	2'13.656	23.530	26.766	21.634	3'25.586P	215,6	15:32'52.347
17	25.363	22.864	26.458	21.584	1'36.269	215,1	15:34'28.616
18	25.314	22.660	26.616	24.113	1'38.703	215,6	15:36'07.319
19	25.514	23.621	27.001	21.788	1'37.924	216,0	15:37'45.243

23 Best Lap (1'33.628)

Lap	Seg.1	Seg.2	Seg.3	Seg.4	Lap Time	km/h	Local Time
1		23.389	27.656	21.149		215,6	
2	25.198	22.373	26.449	21.078	1'35.098	217,3	15:04'52.002
3	24.876	22.144	26.145	20.976	1'34.141C	218,2	15:06'26.143
4	24.989	22.427	26.294	20.971	1'34.681	217,7	15:08'00.824
5	24.786	22.357	26.226	21.046	1'34.415	218,2	15:09'35.239
6	24.756	22.141	26.274	21.636	1'34.807	217,7	15:11'10.046
7	25.678	23.559	28.398	22.502	1'40.137	214,7	15:12'50.183
8	25.003	22.335	26.746	1'48.107	3'02.191P	217,7	15:15'52.374
9	1'10.426	23.780	26.560	23.363	2'24.129P	218,6	15:18'16.503

03/05/2024

P = Pits In/Out - C = Lap Time Cancelled



ACI Racing Weekend Misano, 4-5 Maggio 2024

Campionato Italiano Gran Turismo Sprint - Analisi Tempi Libere 2

Misano Circuit Sic 58 4.226 m

3 / 5

20	25.774	22.978	26.993	22.319	1'38.064	217,3	15:39'23.307
21	25.714	23.469	27.399	24.268	1'40.850	216,4	15:41'04.157
22	25.767	22.891	26.885	21.852	1'37.395	216,4	15:42'41.552
23	25.550	22.980	26.703	21.899	1'37.132C	216,9	15:44'18.684
24	26.873	25.003	32.071	42.187	2'06.134P	201,5	15:46'24.818

55 Nova Race Events (1'32.663)

Lap	Seg.1	Seg.2	Seg.3	Seg.4	Lap Time	km/h	Local Time
1							
2	48.880	23.134	28.400	1'18.718	2'59.132P	216,4	15:03'17.410
3	42.927	22.729	26.572	21.068	1'53.296CP	220,9	15:05'10.706
4	25.523	22.356	26.507	20.897	1'35.283	221,3	15:06'45.989
5	25.042	22.179	26.152	20.815	1'34.188	222,2	15:08'20.177
6	24.988	22.071	26.053	21.027	1'34.139C	220,9	15:09'54.316
7	24.855	22.195	27.388	3'31.464	4'45.902CP	221,3	15:14'40.218
8	41.231	22.445	26.334	20.843	1'50.853P	220,4	15:16'31.071
9	24.797	22.049	25.890	21.021	1'33.757	221,8	15:18'04.828
10	24.982	22.040	26.116	20.821	1'33.959	222,2	15:19'38.787
11	24.808	22.015	26.397	1'52.983	3'06.203P	221,8	15:22'44.990
12	40.276	22.356			1'50.308CP	221,3	15:24'35.298
13	24.893	22.192	26.014	20.777	1'33.876C	221,8	15:26'09.174
14	24.801	22.064	25.995	20.666	1'33.526	222,7	15:27'42.700
15	25.225	25.583	27.579	3'39.204	4'57.591P	222,2	15:32'40.291
16	41.068	22.988	26.561	21.570	1'52.187P	220,0	15:34'32.478
17	24.474	22.163	25.923	21.367	1'33.927	222,7	15:36'06.405
18	24.486	22.068	25.797	20.587	1'32.938	225,5	15:37'39.343
19	24.376	21.811	25.906	20.570	1'32.663	222,2	15:39'12.006
20	26.283	24.998	26.298	1'27.185	2'44.764P	221,8	15:41'56.770
21	41.754	22.442	26.158			221,8	

52 AF Corse (1'33.670)

Lap	Seg.1	Seg.2	Seg.3	Seg.4	Lap Time	km/h	Local Time
1							
2	1'11.130	22.941	26.512	20.988	2'21.571P	213,9	15:02'56.335
3	24.770	22.606	26.372	21.014	1'34.762C	214,7	15:04'31.097
4	24.693	22.732	26.145	20.806	1'34.376	215,6	15:06'05.473
5	24.585	22.256	26.126	20.727	1'33.694	215,6	15:07'39.167
6	24.608	22.317	26.130	20.615	1'33.670	215,6	15:09'12.837
7	24.682	22.182	26.111	20.806	1'33.781	215,6	15:10'46.618
8	24.753	22.215	26.207	21.031	1'34.206	216,4	15:12'20.824
9	24.932	22.459	26.188	20.946	1'34.525	215,6	15:13'55.349
10	24.774	22.289	26.062	20.780	1'33.905	216,0	15:15'29.254
11	24.681	22.279	26.208	20.778	1'33.946	215,6	15:17'03.200
12	24.650	22.212	26.207	23.349	1'36.418C	216,4	15:18'39.618
13	24.711	22.287	26.059	20.836	1'33.893	216,0	15:20'13.511
14	25.632	23.193	33.197	20.893	1'42.915	163,1	15:21'56.426
15	24.663	22.237	26.236	2'35.260	3'48.396P	216,4	15:25'44.822
16	44.441	22.566	26.402	21.129	1'54.538P	215,6	15:27'39.360
17	24.934	22.255	26.183	21.082	1'34.454	216,4	15:29'13.814
18	24.930	22.228	26.187	20.884	1'34.229	216,9	15:30'48.043
19	24.696	22.341	26.071	21.263	1'34.371	217,3	15:32'22.414
20	25.218	22.199	26.098	20.557	1'34.072	216,0	15:33'56.486
21	24.736	22.111	26.178	20.966	1'33.991	216,4	15:35'30.477
22	24.701	22.239	25.972	20.834	1'33.746	217,3	15:37'04.223
23	24.850	22.242	26.213	20.799	1'34.104	216,9	15:38'38.327
24	24.648	22.196	26.068	21.036	1'33.948	216,4	15:40'12.275
25	24.858	22.171	25.997	20.998	1'34.024	216,4	15:41'46.299
26	24.653	22.086	26.099	20.885	1'33.723	216,0	15:43'20.022
27	24.853	22.038	26.126	20.852	1'33.869	216,9	15:44'53.891
28	24.651	22.224	26.592		217,3		

61 AKM Motorsport (1'34.476)

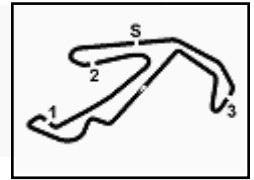
Lap	Seg.1	Seg.2	Seg.3	Seg.4	Lap Time	km/h	Local Time
1							
2	56.293	24.018	27.890	21.987	2'10.188P	213,9	15:04'37.823
3	25.511	22.707	26.825	21.269	1'36.312	213,9	15:06'14.135
4	25.226	23.794	26.455	23.769	1'39.244	216,0	15:07'53.379
5	25.092	22.475	26.324	21.275	1'35.166C	215,6	15:09'28.545
6	24.808	22.480	26.442	21.042	1'34.772C	215,6	15:11'03.317
7	24.868	22.362	26.379	20.902	1'34.511	216,0	15:12'37.828
8	24.836	22.337	26.411	21.065	1'34.649C	214,7	15:14'12.477
9	24.818	22.367	26.491	21.336	1'35.012	214,7	15:15'47.489
10	24.838	22.389	26.379	21.011	1'34.617	215,6	15:17'22.106
11	24.702	22.415	26.313	21.143	1'34.573C	215,1	15:18'56.679
12	25.795	23.278	26.890	1'58.082	3'14.045CP	216,4	15:22'10.724
13	42.856	23.163	28.408	21.301	1'55.728P	199,3	15:24'06.452
14	25.198	22.616	26.610	22.111	1'36.535	214,3	15:25'42.987
15	27.026	25.312	26.951	21.937	1'41.226	215,6	15:27'24.213
16	25.202	22.696	26.657	21.904	1'36.459	216,4	15:29'00.672
17	25.315	22.450	26.417	20.919	1'35.101	216,0	15:30'35.773
18	24.717	22.324	26.581	21.045	1'34.667	215,6	15:32'10.440
19	24.871	22.527	26.597	21.076	1'35.071	214,3	15:33'45.511
20	24.759	22.406	26.547	20.892	1'34.604	215,6	15:35'20.115
21	27.134	25.064	26.374	24.782	1'43.354	216,4	15:37'03.469
22	26.575	22.691	28.117	22.610	1'39.993	215,6	15:38'43.462
23	24.851	22.393	26.867	32.211	1'46.322	214,7	15:40'29.784
24	27.454	22.753	26.271	21.543	1'38.021	216,0	15:42'07.805
25	24.831	22.315	26.501	20.829	1'34.476	215,1	15:43'42.281
26	26.726	23.299	26.327			216,4	

63 VSR (1'33.752)

Lap	Seg.1	Seg.2	Seg.3	Seg.4	Lap Time	km/h	Local Time
1		23.392	27.149	21.373		211,4	
2	25.066	22.609	26.674	21.305	1'35.654	214,7	15:04'03.561
3	25.556	22.499	26.554	20.930	1'35.539	214,7	15:05'39.100
4	24.922	22.372	26.435	20.919	1'34.648	215,6	15:07'13.748
5	24.800	22.523	26.426	20.924	1'34.673	215,6	15:08'48.421
6	24.526	22.234	26.240	20.752	1'33.752	215,6	15:10'22.173
7	24.581	22.294	26.785	32.096	1'45.756P	216,4	15:12'07.929
8	1'43.325	22.936	27.112	33.304	3'06.677P	215,6	15:15'14.606

03/05/2024

P = Pits In/Out - C = Lap Time Cancelled



ACI Racing Weekend Misano, 4-5 Maggio 2024

Campionato Italiano Gran Turismo Sprint - Analisi Tempi Libere 2

Misano Circuit Sic 58 4.226 m

4 / 5

9	1'46.362	22.716	26.267	20.874	2'56.219CP	216,9	15:18'10.825
10	25.003	22.411	26.121	21.112	1'34.647	217,7	15:19'45.472
11	24.866	22.265	26.229	20.880	1'34.240	216,9	15:21'19.712
12	24.580	22.116	26.121	20.689	1'33.506C	217,7	15:22'53.218
13	24.555	22.221	26.145	20.668	1'33.589C	218,2	15:24'26.807
14	24.925	22.103	26.112	21.156	1'34.296C	217,3	15:26'01.103
15	24.651	22.124	26.217	20.695	1'33.687C	217,7	15:27'34.790
16	24.643	22.103	26.599	21.090	1'34.435C	215,6	15:29'09.225
17	24.683	22.224	26.285	21.108	1'34.300	216,9	15:30'43.525
18	25.906	23.429	27.313	34.165	1'50.813P	216,0	15:32'34.338
19	1'31.783	22.835	26.656	5'55.733	8'17.007P	215,6	15:40'51.345

4	31.429	29.399	33.965	25.400	2'00.193		15:08'52.125
5	27.885	26.323	31.974	25.022	1'51.204		15:10'43.329
6	25.947	22.769	26.856	21.464	1'37.036		15:12'20.365
7	26.346	22.776	26.892	21.203	1'37.217C		15:13'57.582
8	25.211	22.665	26.708	20.949	1'35.533		15:15'33.115
9	25.054	22.445	26.510	20.938	1'34.947		15:17'08.062
10	25.009	22.439	26.677	2'18.927	3'33.052P		15:20'41.114
11	46.979	28.517	28.423	22.589	2'06.508P		15:22'47.622
12	24.804	22.314	26.525	20.883	1'34.526		15:24'22.148
13	24.664	22.239	26.481	20.853	1'34.237		15:25'56.385
14	24.723	22.219	26.411	20.733	1'34.086		15:27'30.471
15	24.865	22.599	26.632	2'29.353	3'43.449P		15:31'13.920
16	42.803	23.211	26.491	20.998	1'53.503CP		15:33'07.423
17	25.086	22.803	26.413	21.253	1'35.555C		15:34'42.978
18	24.865	22.633	26.260	21.133	1'34.891		15:36'17.869
19	24.770	22.518	26.289	21.047	1'34.624C		15:37'52.493
20	24.777	22.381	26.322	20.965	1'34.445		15:39'26.938
21	27.359	25.659	28.986	24.158	1'46.162		15:41'13.100
22	24.776	22.363	26.227	20.876	1'34.242		15:42'47.342
23	24.626	22.291	26.080	21.030	1'34.027		15:44'21.369
24	25.446	23.233	27.734				

66 VSR (1'32.862)

Lap	Seg.1	Seg.2	Seg.3	Seg.4	Lap Time	km/h	Local Time
1		22.645	26.687	22.516		217,7	
2	24.688	21.771	26.001	20.425	1'32.885	218,2	15:03'43.235
3	24.643	21.897	25.990	20.651	1'33.181	220,0	15:05'16.416
4	24.659	21.812	25.879	20.550	1'32.900	220,4	15:06'49.316
5	24.772	22.168	26.218	22.190	1'35.348	220,0	15:08'24.664
6	24.593	21.982	25.847	20.440	1'32.862	219,5	15:09'57.526
7	24.937	22.167	26.154	31.402	1'44.660P	220,4	15:11'42.186
8	3'27.673	22.571	26.358	21.124	4'37.726P	218,6	15:16'19.912
9	24.953	22.314	25.976	21.081	1'34.324	220,0	15:17'54.236
10	24.897	22.256	26.183	20.914	1'34.250	220,4	15:19'28.486
11	24.852	21.994	25.989	20.607	1'33.442	220,4	15:21'01.928
12	25.004	22.178	26.155	20.912	1'34.249C	218,6	15:22'36.177
13	24.926	22.007	25.785	20.596	1'33.314	220,4	15:24'09.491
14	24.778	22.043	26.208	20.904	1'33.933C	220,4	15:25'43.424
15	24.884	22.243	26.199	20.846	1'34.172C	220,9	15:27'17.596
16	24.708	22.051	25.843	20.675	1'33.277C	219,1	15:28'50.873
17	24.766	21.914	26.096	20.595	1'33.371	220,0	15:30'24.244
18	24.599	21.950	26.122	21.143	1'33.814C	219,5	15:31'58.058
19	24.873	21.969	26.061	30.994	1'43.897CP	219,5	15:33'41.955
20	1'28.960	22.236	26.054	8'34.191	10'51.441P	220,9	15:44'33.396

77 Nova Race Events (1'33.844)

Lap	Seg.1	Seg.2	Seg.3	Seg.4	Lap Time	km/h	Local Time
1		25.650	28.244	22.234		216,9	
2	25.753	23.510	27.033	21.576	1'37.872	218,6	15:03'45.725
3	25.473	22.608	26.789	21.506	1'36.376	219,5	15:05'22.101
4	25.459	22.538	26.757	21.521	1'36.275	219,5	15:06'58.376
5	25.218	23.011	26.855	21.649	1'36.733	220,0	15:08'35.109
6	25.382	22.668	26.661	21.442	1'36.153	219,5	15:10'11.262
7	25.201	22.557	26.505	21.484	1'35.747	219,1	15:11'47.009
8	25.433	22.415	26.493	21.350	1'35.691	219,1	15:13'22.700
9	25.270	22.624	26.398	21.286	1'35.578	218,6	15:14'58.278
10	25.238	22.322	26.461	21.363	1'35.384	220,0	15:16'33.662
11	27.714	25.640	30.364	3'38.825	5'02.543P	187,8	15:21'36.205
12	42.926	23.015	26.656	21.257	1'53.854P	218,2	15:23'30.059
13	25.086	22.300	26.178	20.911	1'34.475	218,6	15:25'04.534
14	25.305	22.253	26.254	20.808	1'34.620	220,0	15:26'39.154
15	24.916	22.054	26.178	21.870	1'35.018	220,0	15:28'14.172
16	25.187	22.280	26.284	20.904	1'34.655	219,5	15:29'48.827
17	25.183	24.616	30.294	21.518	1'41.611	194,6	15:31'30.438
18	24.993	22.287	26.060	20.762	1'34.102	219,5	15:33'04.540
19	24.960	21.988	26.195	20.701	1'33.844	219,5	15:34'38.384
20	27.048	22.622	27.138	2'33.747	3'50.555P	219,1	15:38'28.939
21	44.183	23.586	29.001	21.671	1'58.441P	212,2	15:40'27.380
22	25.211	22.643	26.494	21.226	1'35.574	219,5	15:42'02.954
23	25.159	22.321	26.470	21.153	1'35.103	219,1	15:43'38.057
24	25.053	22.311	26.466			219,5	

85 Imperiale Sport Car Service (1'33.139)

Lap	Seg.1	Seg.2	Seg.3	Seg.4	Lap Time	km/h	Local Time
1							
2	50.110	25.401	29.961	21.785	2'07.257P	171,2	15:02'29.647
3	26.037	22.994	27.305	21.968	1'38.304	218,2	15:04'07.951
4	25.146	22.540	26.602	21.198	1'35.486	218,6	15:05'43.437
5	31.095	26.200	28.971	21.902	1'48.168	216,4	15:07'31.605
6	24.669	22.079	26.364	21.660	1'34.772	220,9	15:09'06.377
7	24.589	21.874	26.074	20.867	1'33.404	220,9	15:10'39.781
8	25.213	22.105	26.253	2'44.784	3'58.355P	220,9	15:14'38.136
9	40.549	22.619	26.223	20.755	1'50.146P	219,1	15:16'28.282
10	24.763	22.042	25.975	20.706	1'33.486C	220,9	15:18'01.768
11	24.735	21.894	25.977	20.763	1'33.369C	220,4	15:19'35.137
12	24.659	21.773	25.948	20.759	1'33.139	220,9	15:21'08.276

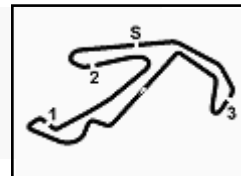
75 Colavita Leonardo (1'34.027)

Lap	Seg.1	Seg.2	Seg.3	Seg.4	Lap Time	km/h	Local Time
1							
2	1'02.032	32.120	38.131	27.892	2'40.175P	159,3	15:04'46.747
3	32.486	30.983	35.523	26.193	2'05.185		15:06'51.932

03/05/2024

P = Pits In/Out - C = Lap Time Cancelled




ACI Racing Weekend Misano, 4-5 Maggio 2024
Campionato Italiano Gran Turismo Sprint - Analisi Tempi Libere 2

Misano Circuit Sic 58 4.226 m

5 / 5

13	24.644	22.299	26.245	1'29.430	2'42.618P	221,8	15:23'50.894	20	24.842	22.327	26.211	20.923	1'34.303C	214,3	15:38'31.120
14	41.349	22.836	26.357	21.162	1'51.704P	218,2	15:25'42.598	21	24.867	22.255	26.421	20.679	1'34.222C	213,9	15:40'05.342
15	24.790	22.389	26.641	22.428	1'36.248C	220,9	15:27'18.846	22	24.911	22.195	26.251	20.907	1'34.264	214,3	15:41'39.606
16	24.801	22.028	26.114	20.957	1'33.900C	220,4	15:28'52.746	23	25.035	22.302	26.435	20.807	1'34.579	214,7	15:43'14.185
17	24.804	21.967	26.146	20.858	1'33.775C	220,4	15:30'26.521	24	24.981	22.198	26.452	20.852	1'34.483	214,7	15:44'48.668
18	24.814	21.896	26.087	20.969	1'33.766	220,4	15:32'00.287	25	24.714	22.167	26.255	20.750	1'33.886	214,7	15:46'22.554
19	24.753	21.937	26.009	20.902	1'33.601	220,4	15:33'33.888								
20	24.651	21.988	26.086	20.922	1'33.647C	220,4	15:35'07.535								
21	24.782	22.062	25.908	20.652	1'33.404	220,9	15:36'40.939								
22	24.723	22.006	26.019	1'23.851	2'36.599P	220,9	15:39'17.538								
23	41.272	22.379	26.685	1'19.051	2'49.387P	218,2	15:42'06.925								
24	40.364	22.243	26.058			220,0									

99 Tresor Audi Sport Italia (1'32.611)

Lap	Seg.1	Seg.2	Seg.3	Seg.4	Lap Time	km/h	Local Time
1			24.921	28.529	22.794	205,7	
2	26.676	24.400	28.330	22.308	1'41.714	210,9	15:04'02.543
3	29.073	25.872	28.649	21.106	1'44.700	207,3	15:05'47.243
4	25.110	22.656	26.226	20.820	1'34.812C	218,2	15:07'22.055
5	24.642	22.636	26.309	20.757	1'34.344C	217,3	15:08'56.399
6	24.626	22.248	26.056	20.825	1'33.755	217,7	15:10'30.154
7	24.776	22.264	26.790	21.237	1'35.067	216,0	15:12'05.221
8	24.635	22.174	26.156	20.712	1'33.677	216,4	15:13'38.898
9	24.394	22.107	26.011	20.646	1'33.158	217,7	15:15'12.056
10	25.521	23.122	26.638	32.607	1'47.888P	216,0	15:16'59.944
11	1'15.601	23.466	30.217	24.630	2'33.914P	178,8	15:19'33.858
12	24.206	22.041	25.874	20.490	1'32.611	217,7	15:21'06.469
13	25.285	23.014	26.288	20.982	1'35.569	217,7	15:22'42.038
14	25.168	23.292	26.854	23.271	1'38.585	215,6	15:24'20.623
15	24.544	22.191	25.852	20.956	1'33.543	216,9	15:25'54.166
16	24.497	22.011	25.751	20.579	1'32.838	217,7	15:27'27.004
17	26.720	24.748	27.691	22.394	1'41.553	212,6	15:29'08.557
18	24.524	22.041	25.940	31.366	1'43.871CP	217,7	15:30'52.428
19	2'41.186	23.516	30.397	27.253	4'02.352P	214,3	15:34'54.780
20	24.896	22.377	26.212	21.118	1'34.603	216,9	15:36'29.383
21	24.698	22.133	26.104	20.979	1'33.914	217,3	15:38'03.297
22	24.663	22.247	26.100	20.821	1'33.831	216,9	15:39'37.128
17	25.267	22.226	26.300	20.935	1'34.728	216,4	15:31'01.955
18	24.656	22.033	26.172	20.732	1'33.593	216,9	15:32'35.548
19	24.541	21.949	26.195	20.735	1'33.420	216,0	15:34'08.968
20	24.569	22.099	26.316	20.750	1'33.734	217,3	15:35'42.702
21	25.790	22.173	26.122	20.745	1'34.830	216,0	15:37'17.532
22	24.581	22.140	26.069	20.847	1'33.637	217,7	15:38'51.169
23	24.608	21.957	26.316	21.041	1'33.922	215,6	15:40'25.091
24	24.498	22.081	25.925	20.709	1'33.213	217,3	15:41'58.304
25	24.625	22.191	26.384	20.826	1'34.026	216,4	15:43'32.330
26	24.678	22.180	26.339			217,3	

88 AF Corse (1'33.213)

Lap	Seg.1	Seg.2	Seg.3	Seg.4	Lap Time	km/h	Local Time
1		23.977	26.936	21.957		207,7	
2	25.537	22.677	26.586	21.039	1'35.839	214,3	15:03'34.197
3	24.955	22.303	26.372	21.357	1'34.987C	215,1	15:05'09.184
4	24.895	22.046	26.675	20.863	1'34.479	215,6	15:06'43.663
5	25.012	22.166	26.307	21.154	1'34.639	215,6	15:08'18.302
6	24.722	22.072	26.396	20.917	1'34.107	215,1	15:09'52.409
7	24.578	22.040	26.271	20.712	1'33.601	216,0	15:11'26.010
8	24.720	22.257	26.092	20.694	1'33.763	216,0	15:12'59.773
9	24.800	22.027	26.869	23.207	1'36.903	214,3	15:14'36.676
10	24.627	22.036	26.174	21.562	1'34.399C	215,1	15:16'11.075
11	24.515	22.078	26.173	20.681	1'33.447	216,4	15:17'44.522
12	26.309	23.188	26.505	21.549	1'37.551	216,0	15:19'22.073
13	24.533	22.060	25.978	20.678	1'33.249C	216,4	15:20'55.322
14	25.583	22.233	26.255	3'53.609	5'07.680P	216,9	15:26'03.002
15	40.081	22.621	26.106	21.235	1'50.043P	215,6	15:27'53.045
16	24.880	22.232	26.216	20.854	1'34.182	216,4	15:29'27.227
17	25.267	22.226	26.300	20.935	1'34.728	216,4	15:31'01.955
18	24.656	22.033	26.172	20.732	1'33.593	216,9	15:32'35.548
19	24.541	21.949	26.195	20.735	1'33.420	216,0	15:34'08.968
20	24.569	22.099	26.316	20.750	1'33.734	217,3	15:35'42.702
21	25.790	22.173	26.122	20.745	1'34.830	216,0	15:37'17.532
22	24.581	22.140	26.069	20.847	1'33.637	217,7	15:38'51.169
23	24.608	21.957	26.316	21.041	1'33.922	215,6	15:40'25.091
24	24.498	22.081	25.925	20.709	1'33.213	217,3	15:41'58.304
25	24.625	22.191	26.384	20.826	1'34.026	216,4	15:43'32.330
26	24.678	22.180	26.339			217,3	

97 Fach Auto Tech (1'33.217)

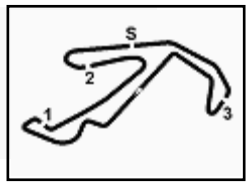
Lap	Seg.1	Seg.2	Seg.3	Seg.4	Lap Time	km/h	Local Time
1							
2	1'01.480	23.918	26.956	21.240	2'13.594P	208,1	15:02'41.125
3	24.757	22.297	26.098	20.860	1'34.012	214,7	15:04'15.137
4	24.601	22.135	26.076	20.802	1'33.614	216,0	15:05'48.751
5	24.698	22.410	26.601	6'16.435	7'30.144P	216,4	15:13'18.895
6	40.562	22.484	26.361	20.554	1'49.961P	213,4	15:15'08.856
7	24.413	22.171	26.053	20.580	1'33.217	213,9	15:16'42.073
8	24.438	22.108	26.098	20.593	1'33.237	214,3	15:18'15.310
9	24.522	22.133	26.139	20.674	1'33.468	213,4	15:19'48.778
10	24.679	22.123	26.050	1'21.974	2'34.826P	215,1	15:22'23.604
11	42.866	22.690	26.330	21.322	1'53.208P	215,6	15:24'16.812
12	25.018	22.363	26.356	21.266	1'35.003	214,3	15:25'51.815
13	24.911	22.222	26.310	20.868	1'34.311	215,1	15:27'26.126
14	24.958	22.436	26.344	21.198	1'34.936	214,7	15:29'01.062
15	26.358	22.997	26.387	20.909	1'36.651	215,1	15:30'37.713
16	24.846	22.247	26.466	20.866	1'34.425	215,6	15:32'12.138
17	24.864	22.195	26.309	21.017	1'34.385	215,1	15:33'46.523
18	24.859	22.347	26.462	21.175	1'34.843	215,1	15:35'21.366
19	25.133	22.761	26.566	20.991	1'35.451	214,7	15:36'56.817

03/05/2024

P = Pits In/Out - C = Lap Time Cancelled

Powered by FICr PERUGIA TIMING

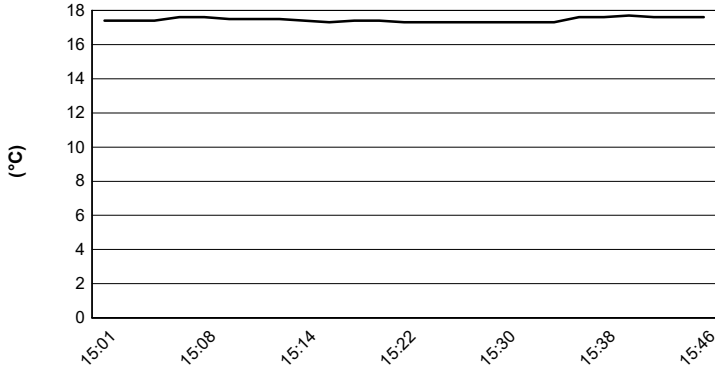




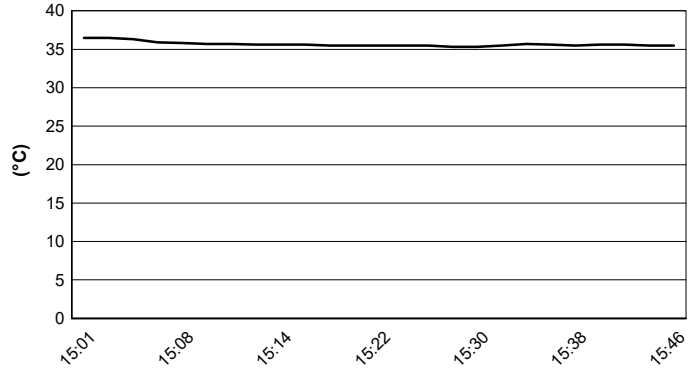
ACI Racing Weekend Misano, 4-5 Maggio 2024
Campionato Italiano Gran Turismo Sprint - Meteo Libere 2
Session started 15:00 - Session ended 15:46

Misano Circuit Sic 58 4.226 m

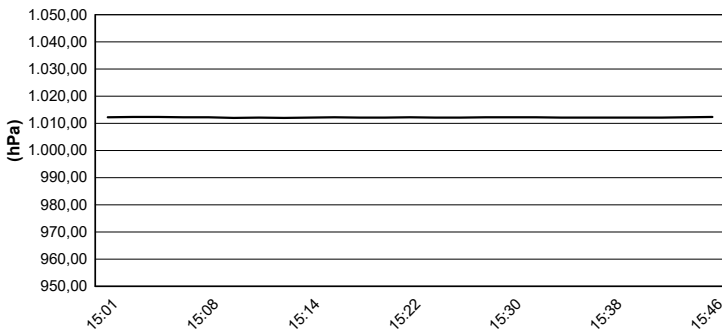
Air Temperature



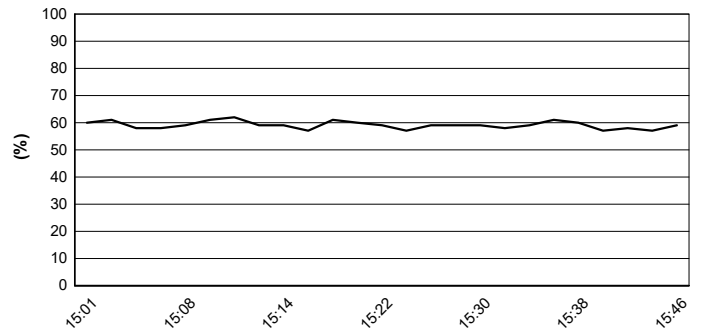
Track Temperature



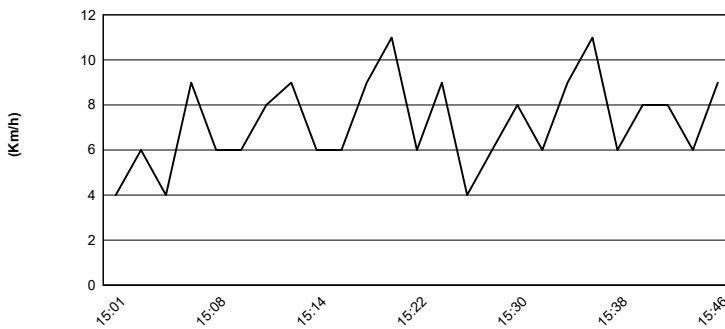
Air Pressure



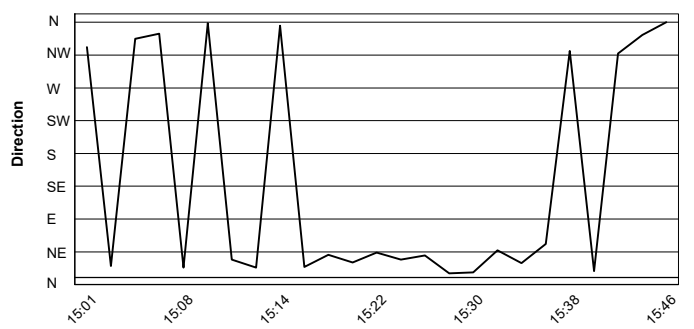
Humidity



Wind Speed

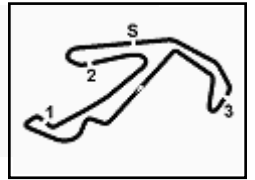


Wind Direction



03/05/2024



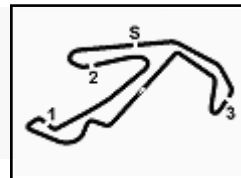


ACI Racing Weekend Misano, 4-5 Maggio 2024

Campionato Italiano Gran Turismo Sprint - Pit Times Libere 2

Misano Circuit Sic 58 4.226 m

No.	Entrant	Car		Local Time	Pit Time			
5	Lazarus Corse	M.DI GIUSTO	PIT OUT	15:01'35.266				
			PIT IN	15:11'02.594				
			PIT OUT	15:14'31.995	3'29.401			
			PIT IN	15:22'36.781				
			PIT OUT	15:25'21.984	2'45.203			
			PIT IN	15:33'05.233				
			PIT OUT	15:34'45.870	1'40.637			
			PIT IN	15:44'16.814				
7	BMW Italia Ceccato Racing	J.KLINGMANN	PIT OUT	15:00'35.059				
			PIT IN	15:11'33.980				
			PIT OUT	15:12'56.905	1'22.925			
			PIT IN	15:19'07.688				
			PIT OUT	15:21'13.602	2'05.914			
			PIT IN	15:32'02.535				
			PIT OUT	15:34'29.096	2'26.561			
			PIT IN	15:42'08.652				
8	BMW Italia Ceccato Racing	F.MALVESTITI	PIT OUT	15:00'36.882				
			PIT IN	15:02'09.385				
			PIT OUT	15:03'31.385	1'22.000			
			PIT IN	15:16'01.941				
			PIT OUT	15:18'37.099	2'35.158			
			PIT IN	15:29'31.416				
			PIT OUT	15:30'51.043	1'19.627			
			PIT IN	15:41'40.902				
12	Tresor Audi Sport Italia	P.DELLI GUANTI	PIT OUT	15:00'34.136				
			PIT IN	15:12'12.262				
			PIT OUT	15:14'24.258	2'11.996			
			PIT IN	15:28'29.338				
			PIT OUT	15:30'35.661	2'06.323			
			PIT IN	15:38'55.677				
			16	AKM Motorsport	R.GUZMAN	PIT OUT	15:01'44.261	
						PIT IN	15:03'19.414	
PIT OUT	15:04'20.005	1'00.591						
PIT IN	15:18'32.710							
PIT OUT	15:20'18.683	1'45.973						
PIT IN	15:31'22.199							
PIT OUT	15:33'05.440	1'43.241						
PIT IN	15:37'49.631							
19	VSR	R.CAZZANIGA	PIT OUT	15:02'49.327				
			PIT IN	15:12'05.059				
			PIT OUT	15:16'58.479	4'53.420			
			PIT IN	15:37'09.410				
			PIT OUT	15:38'34.096	1'24.686			
			PIT IN	15:40'01.388				
			22	Easy Race	T.BIAGI	PIT OUT	15:01'47.826	
						PIT IN	15:08'09.076	
PIT OUT	15:12'50.198	4'41.122						

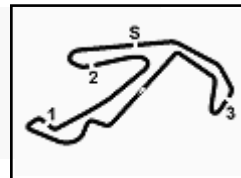


ACI Racing Weekend Misano, 4-5 Maggio 2024

Campionato Italiano Gran Turismo Sprint - Pit Times Libere 2

Misano Circuit Sic 58 4.226 m

No.	Entrant	Car		Local Time	Pit Time
22	Easy Race	T.BIAGI	PIT IN	15:20'42.807	
			PIT OUT	15:24'57.358	4'14.551
			PIT IN	15:34'19.771	
			PIT OUT	15:36'03.851	1'44.080
			PIT IN	15:45'21.750	
23	Best Lap	L.COLUCCIO	PIT OUT	15:01'45.416	
			PIT IN	15:14'23.082	
			PIT OUT	15:16'43.540	2'20.458
			PIT IN	15:26'11.987	
			PIT OUT	15:29'30.937	3'18.950
			PIT IN	15:37'22.896	
			PIT OUT	15:39'43.456	2'20.560
28	Nova Race Events	V.SCARPETTA	PIT OUT	15:00'25.297	
			PIT IN	15:14'45.389	
			PIT OUT	15:17'29.628	2'44.239
			PIT IN	15:25'29.623	
			PIT OUT	15:27'53.692	2'24.069
			PIT IN	15:37'20.934	
			PIT OUT	15:39'17.007	1'56.073
44	Ebimotors	P.VENEROSI PESCIOLINI	PIT OUT	15:01'06.093	
			PIT IN	15:19'26.564	
			PIT OUT	15:22'21.452	2'54.888
			PIT IN	15:29'12.000	
			PIT OUT	15:31'19.591	2'07.591
			PIT IN	15:46'07.655	
52	AF Corse	J.FERATI	PIT OUT	15:01'27.968	
			PIT IN	15:23'28.457	
			PIT OUT	15:26'07.939	2'39.482
			PIT IN	15:46'26.756	
54	Imperiale Sport Car Service	G.FASCICOLO	PIT OUT	15:01'33.769	
			PIT IN	15:06'57.724	
			PIT OUT	15:08'08.332	1'10.608
			PIT IN	15:25'48.709	
			PIT OUT	15:27'26.853	1'38.144
			PIT IN	15:38'38.310	
55	Nova Race Events	F.JELMINI	PIT OUT	15:00'48.364	
			PIT IN	15:02'17.531	
			PIT OUT	15:03'42.242	1'24.711
			PIT IN	15:11'28.429	
			PIT OUT	15:15'03.336	3'34.907
			PIT IN	15:21'11.227	
			PIT OUT	15:23'08.205	1'56.978
			PIT IN	15:29'21.957	
			PIT OUT	15:33'03.544	3'41.587
			PIT IN	15:40'49.759	
			PIT OUT	15:42'19.932	1'30.173
			PIT IN	15:43'45.672	
			61	AKM Motorsport	A.MCINTOSH

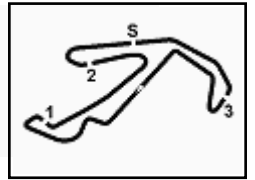


ACI Racing Weekend Misano, 4-5 Maggio 2024

Campionato Italiano Gran Turismo Sprint - Pit Times Libere 2

Misano Circuit Sic 58 4.226 m

No.	Entrant	Car		Local Time	Pit Time
61	AKM Motorsport	A.MCINTOSH	PIT IN	15:20'32.206	
			PIT OUT	15:22'34.108	2'01.902
			PIT IN	15:45'19.803	
63	VSR	B.MOULIN	PIT OUT	15:00'58.129	
			PIT IN	15:11'55.116	
			PIT OUT	15:13'31.195	1'36.079
			PIT IN	15:15'01.748	
			PIT OUT	15:16'42.502	1'40.754
			PIT IN	15:32'21.483	
			PIT OUT	15:33'48.347	1'26.864
66	VSR	M.MICHELOTTO	PIT OUT	15:00'40.890	
			PIT IN	15:11'29.405	
			PIT OUT	15:14'52.354	3'22.949
			PIT IN	15:33'29.134	
			PIT OUT	15:34'53.061	1'23.927
74	Rossocorsa Racing	S.MARAZZI			
			PIT OUT	15:03'05.096	
			PIT IN	15:09'25.457	
			PIT OUT	15:18'14.690	8'49.233
			PIT IN	15:21'17.903	
			PIT OUT	15:24'01.024	2'43.121
75	Colavita Leonardo	L.COLAVITA			
			PIT OUT	15:02'43.390	
			PIT IN	15:18'43.617	
			PIT OUT	15:21'05.648	2'22.031
			PIT IN	15:29'04.282	
			PIT OUT	15:31'37.143	2'32.861
77	Nova Race Events	L.MAGNONI	PIT OUT	15:00'31.202	
			PIT IN	15:18'19.548	
			PIT OUT	15:22'00.121	3'40.573
			PIT IN	15:36'15.436	
			PIT OUT	15:38'52.142	2'36.706
			PIT IN	15:45'44.436	
85	Imperiale Sport Car Service	J.BARTHOLOMEW			
			PIT OUT	15:00'53.477	
			PIT IN	15:12'13.088	
			PIT OUT	15:15'01.386	2'48.298
			PIT IN	15:22'39.700	
			PIT OUT	15:24'14.184	1'34.484
			PIT IN	15:38'12.712	
			PIT OUT	15:39'40.787	1'28.075
			PIT IN	15:41'05.976	
			PIT OUT	15:42'30.197	1'24.221
88	AF Corse	D.DI AMATO	PIT OUT	15:00'26.652	
			PIT IN	15:22'27.311	
			PIT OUT	15:26'25.945	3'58.634
			PIT IN	15:45'03.758	
97	Fach Auto Tech	D.BLATTNER			



ACI Racing Weekend Misano, 4-5 Maggio 2024

Campionato Italiano Gran Turismo Sprint - Pit Times Libere 2

Misano Circuit Sic 58 4.226 m

No.	Entrant	Car		Local Time	Pit Time
97	Fach Auto Tech	D.BLATTNER	PIT OUT	15:01'11.389	
			PIT IN	15:07'20.515	
			PIT OUT	15:13'42.039	6'21.524
			PIT IN	15:21'19.726	
			PIT OUT	15:22'48.517	1'28.791
99	Tresor Audi Sport Italia	A.COLA	PIT OUT	15:00'46.660	
			PIT IN	15:16'47.361	
			PIT OUT	15:17'57.247	1'09.886
			PIT IN	15:30'39.840	
			PIT OUT	15:33'14.970	2'35.130
		PIT IN	15:44'26.274		



Powered by FICr PERUGIA TIMING